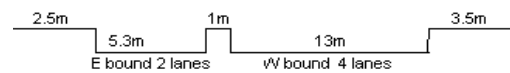
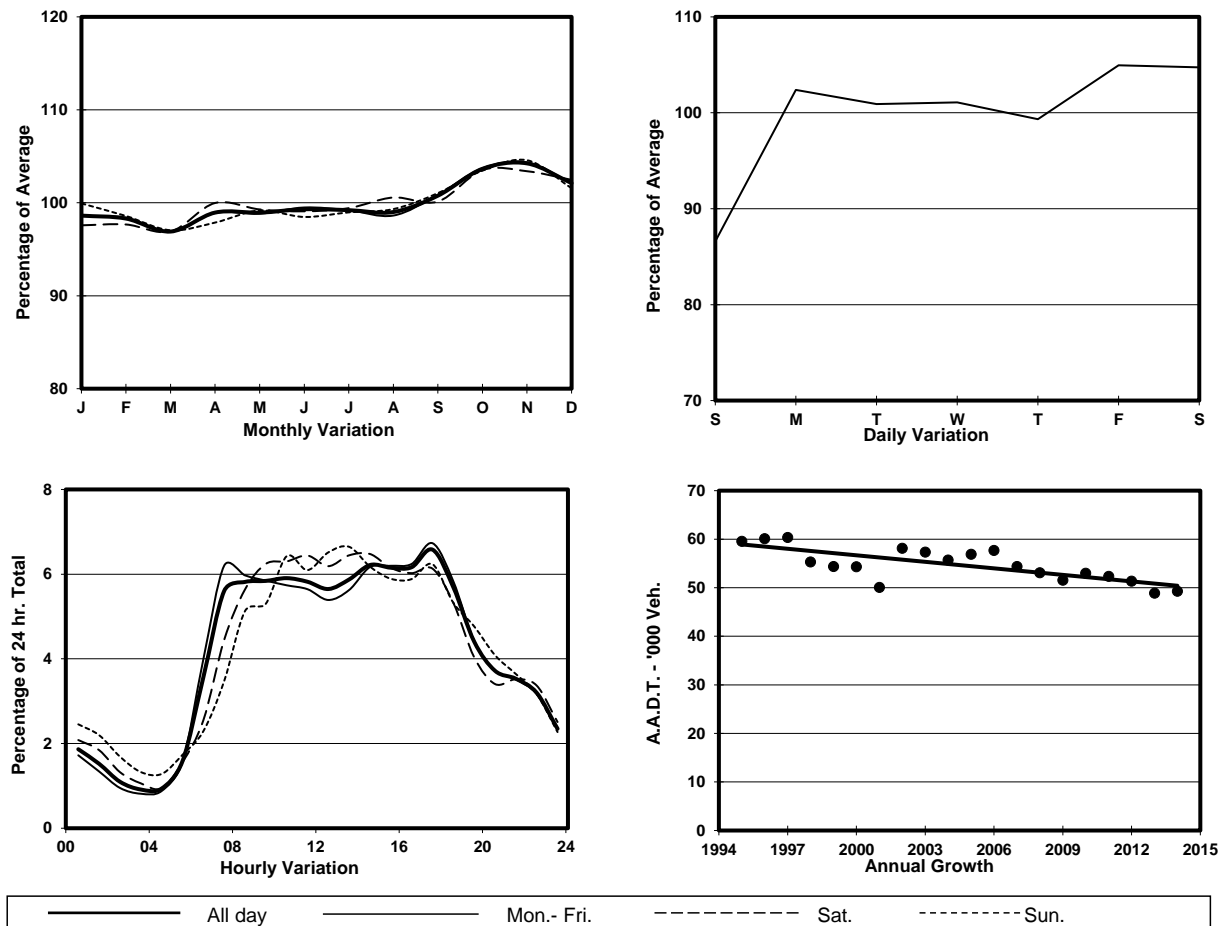


YEAR 2014
 COVERAGE (B) STATION 4203
 ROAD NETWORK MAJOR
 ROAD TYPE PRIMARY DISTRIBUTOR

LINK PRINCE EDWARD RD W (from EMBANKMENT RD to YUEN NGAI ST)



1. TRAFFIC FLOW VARIATION AND GROWTH



2. TRAFFIC CHARACTERISTICS (BY DIRECTION)

Parameter	All - Day	Mon. - Fri.	Sat.	Sun.
EAST BOUND				
A.A.D.T.	2250	2150	2700	2390
R 12 / 24 - %	80.5	80.2	81.4	81.8
R 16 / 24 - %	89.9	89.8	90.6	90.9
AM Peak Hour	0900-1000	0900-1000	0900-1000	0900-1000
One-way flow at AM peak hour	150	150	200	160
T - % (AM)	-	-	-	-
PM Peak Hour	1600-1700	1600-1700	1600-1700	1600-1700
One-way flow at PM peak hour	160	160	190	180
T - % (PM)	-	-	-	-
Prop.of commercial vehicles - 16 hr.	-	1.5	-	-
WEST BOUND				
A.A.D.T.	47000	48320	49290	40540
R 12 / 24 - %	70.9	71.2	71.3	68.3
R 16 / 24 - %	86	86.3	85.9	84.4
AM Peak Hour	0800-0900	0700-0800	0900-1000	0900-1000
One-way flow at AM peak hour	2750	3010	3050	2110
T - % (AM)	-	13.9	-	-
PM Peak Hour	1700-1800	1700-1800	1700-1800	1700-1800
One-way flow at PM peak hour	3100	3260	3030	2530
T - % (PM)	-	5.6	-	-
Prop.of commercial vehicles - 16 hr.	-	6.3	-	-

3. OTHER INFORMATION AND COMMENT

Coverage (B) Station 4203
Year 2014

4. Vehicle classification and occupancy - Monday to Friday

Time		Class of vehicle									
		Motor	Private	Taxi	Private	PLB	Goods veh.		Non	Fr. Bus	
		Cycle	Car		LB		Light	M & H	Fr. Bus	SD	DD
0700-0800	Pro	1.9	17.5	33.4	2.2	10.8	20.7	2.2	6.5	0.4	4.4
	Ocp	1.0	1.4	1.8	2.9	12.5	1.3	1.2	8.1	19.2	40.9
0800-0900	Pro	2.7	49.3	20.3	0.4	8.9	11.5	1.8	2.5	0.2	2.4
	Ocp	1.1	1.4	2.0	5.0	15.2	1.5	1.3	15.1	26.0	47.3
0900-1000	Pro	2.9	43.1	22.1	0.5	9.1	16.0	2.2	1.6	0.2	2.5
	Ocp	1.1	1.5	1.5	1.5	13.8	1.5	1.3	6.4	15.0	40.0
1000-1100	Pro	2.3	34.4	23.2	1.4	6.4	25.9	3.3	0.8	0.2	2.0
	Ocp	1.1	1.5	2.0	2.4	12.5	1.4	1.4	1.5	15.2	40.3
1100-1200	Pro	2.4	40.3	22.0	0.9	7.9	20.1	3.1	1.0	0.2	2.1
	Ocp	1.1	1.5	2.0	1.7	10.7	1.6	1.3	6.7	15.0	37.4
1200-1300	Pro	2.2	39.5	23.9	0.4	6.4	20.4	2.9	2.1	0.2	2.0
	Ocp	1.1	1.6	2.2	2.7	11.4	1.5	1.5	8.3	15.7	39.6
1300-1400	Pro	2.1	36.0	25.5	1.9	7.0	21.2	2.7	0.9	0.2	2.6
	Ocp	1.0	1.5	1.9	1.4	12.5	1.4	1.2	1.0	12.2	32.4
1400-1500	Pro	3.6	37.3	24.0	0.1	6.5	20.7	3.4	2.0	0.2	2.2
	Ocp	1.1	1.5	1.8	1.0	12.3	1.4	1.1	9.3	12.8	32.4
1500-1600	Pro	3.0	41.4	21.8	1.9	5.2	18.6	3.4	2.5	0.2	2.1
	Ocp	1.1	1.6	2.0	6.1	9.9	1.5	1.4	10.5	12.5	31.3
1600-1700	Pro	2.9	40.8	25.5	1.4	4.5	19.2	1.5	2.1	0.1	2.2
	Ocp	1.0	1.5	1.9	6.9	11.6	1.6	1.3	9.5	19.3	29.4
1700-1800 Peak hour	Pro	4.4	48.1	23.8	0.8	5.5	12.1	1.7	1.2	0.2	2.2
	Ocp	1.2	1.6	2.1	3.0	12.5	1.6	1.7	9.2	14.2	34.7
1800-1900	Pro	3.3	47.0	23.2	0.5	8.4	13.9	0.6	1.0	0.2	1.8
	Ocp	1.1	1.5	1.8	1.5	12.9	1.6	1.6	6.4	21.4	47.1
1900-2000	Pro	3.0	46.5	29.8	0.1	10.1	6.8	0.5	1.4	0.2	1.7
	Ocp	1.3	1.6	2.0	3.0	10.2	1.8	1.0	10.5	16.6	31.9
2000-2100	Pro	3.9	38.9	33.1	0.4	12.8	7.1	0.4	0.9	0.2	2.3
	Ocp	1.1	1.7	1.6	1.5	7.2	1.7	1.0	6.6	8.0	11.7
2100-2200	Pro	2.1	35.2	39.6	0.0	11.6	7.2	0.5	0.7	0.2	3.0
	Ocp	1.1	1.6	2.0	0.0	6.6	1.8	1.5	11.3	9.8	13.8
2200-2300	Pro	1.3	42.7	33.4	0.2	14.2	3.8	0.9	0.4	0.3	2.8
	Ocp	1.5	1.8	1.8	1.0	4.5	1.5	1.3	1.0	5.6	11.9
16 hours	Pro	2.8	40.9	25.5	0.8	8.1	15.7	2.0	1.7	0.2	2.3
	Ocp	1.1	1.5	1.9	3.5	11.0	1.5	1.3	8.9	15.2	33.9

Legend

Pro. Proportion of vehicles in % (Sum may not add up to 100% due to figure rounding)
Ocp. Average occupancy of vehicles
M&H Medium and Heavy